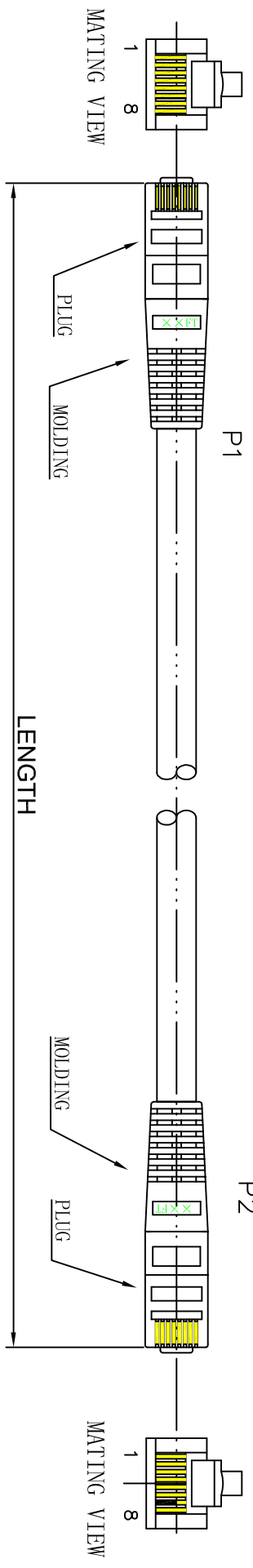
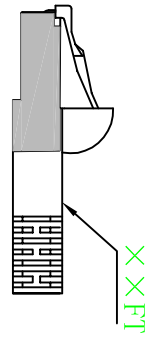
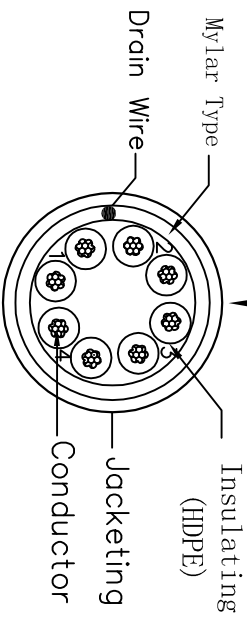


DATE	REV	DESCRIPTION	BY	CHKD

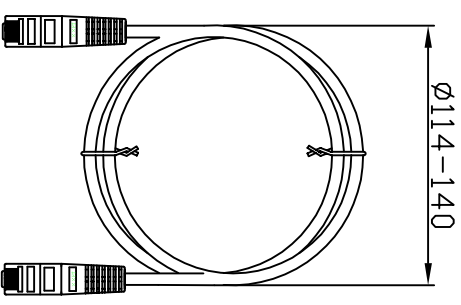


Marking: **YFC FTP CAT.5E 350MHZ PATCH ISO/IEC 11801 & EN 50288 3P VERIFIED FOR GIGABIT ETHERNET 26AWGXAP TYPE CM (UL) C(UL) CMH E164469-F3**



<b>Conductor</b>	Bare Copper 26AWG 7/0,16±0.015mm
<b>Insulation</b>	Thickness:MIN at any point:0.15mm MAX AVG:0.25mm Diameter:0.32±0.00mm
<b>Jacketing</b>	PVC Thickness:MIN at any point:0.50mm MAX AVG:0.60mm Diameter:5.6±0.2mm

<b>WIRE</b>	CAT.5E FTP STR 26AWG
<b>PLUG</b>	YUS-04
<b>Length</b>	XXFT
<b>WIRE COLOR</b>	X



orange 1	green 2
white/orange	white/green
blue 3	brown 4
white/blue	white/brown

**PINOUT**

PA/R	WIRE	P1 (T568A)	P2 (T568B)
1	WHT/ORG	3	1
2	WHT/GRN	1	2
3	GRN	2	3
4	BLU	4	4
5	WHT/BLU	5	5
6	WHT/BRN	7	7
7	BRN	8	8

Unless specified on the drawing, tolerances are per the follows:

.X	± 1
.XX	± 0.2
.XX	± 0.05



DRAW .NO	YUS-04	ITEM	CAT.5E FTP STR 26AWG	
DEPARTMENT		DRAW	SWH	DATE
SCALE		CHECKER		2006/08/29
UNIT	MM	SHEET	1	OF 1